

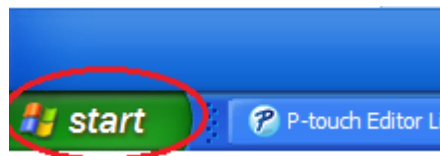
Network Lite Settings Disable Guide

This guide is only relevant to students who have manually setup Network Lite using our guides. Follow the steps below to disable Network Lite settings. This covers the following operating systems:

- **Windows XP**
- **Windows Vista**
- **Windows 7**
- **Windows 8**

Windows XP

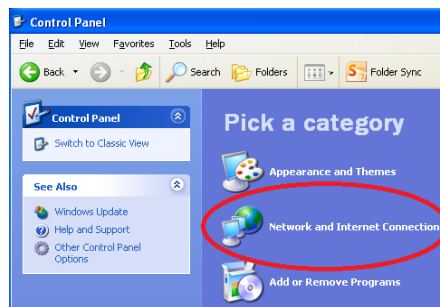
1. Select **Start**



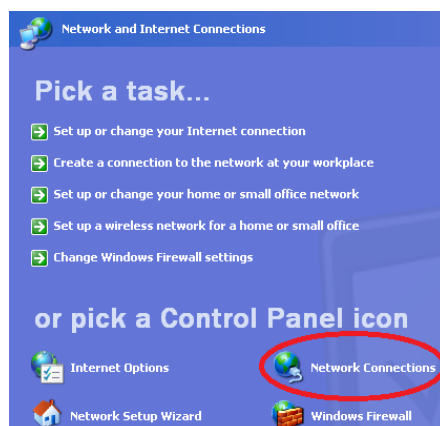
2. Select **Control Panel**



3. Select **Network and Internet Connections**

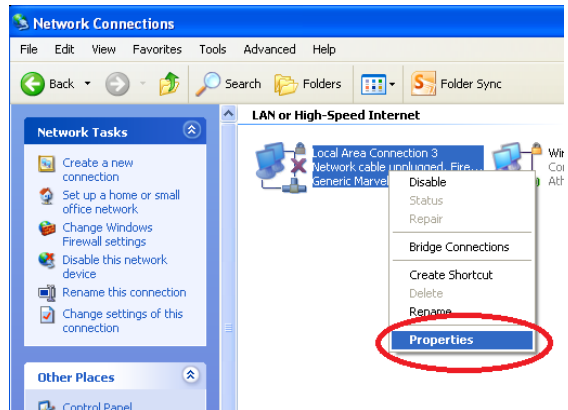


4. Select **Network Connections**

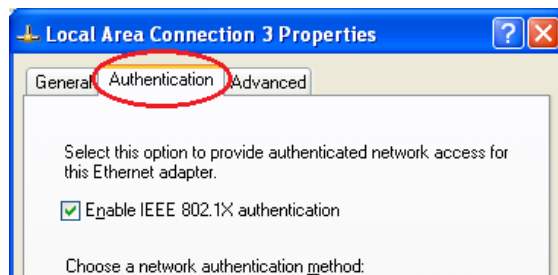


Network Lite Settings Disable Guide

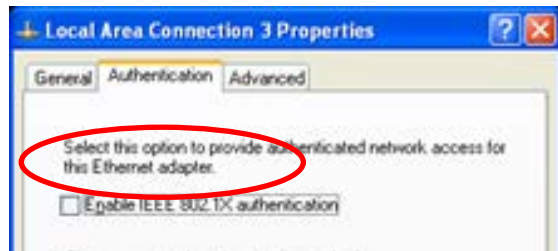
5. Right click on the **Local Area Connection** and then select **Properties**



6. Select the **Authentication** tab

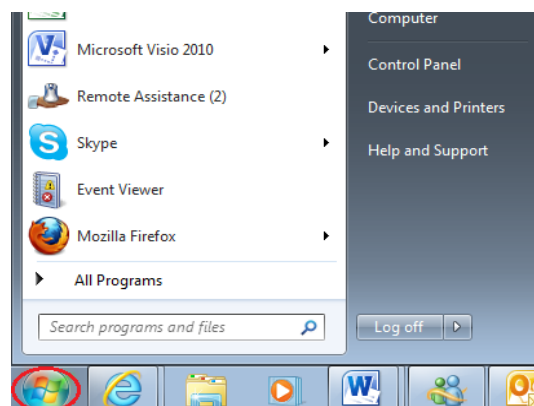


7. Un-tick **Enable IEEE 802.1X Authentication**



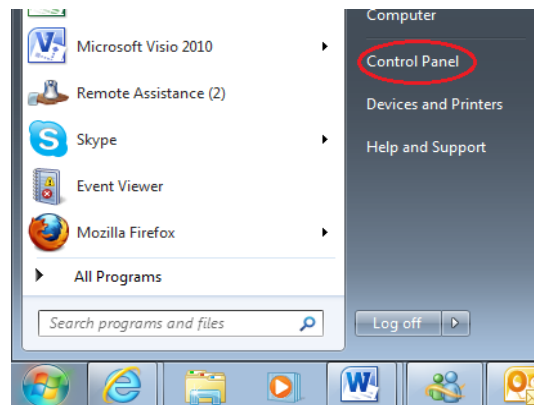
Windows Vista

8. Select **Start**



Network Lite Settings Disable Guide

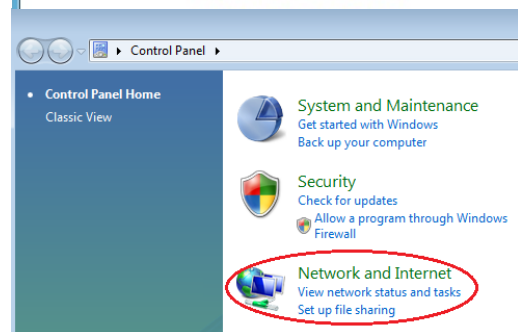
9. Select **Control Panel**



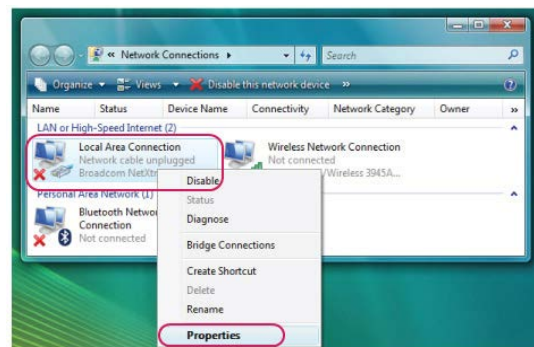
10. Select **Network and Internet**



11. Select **Network and Sharing Centre**

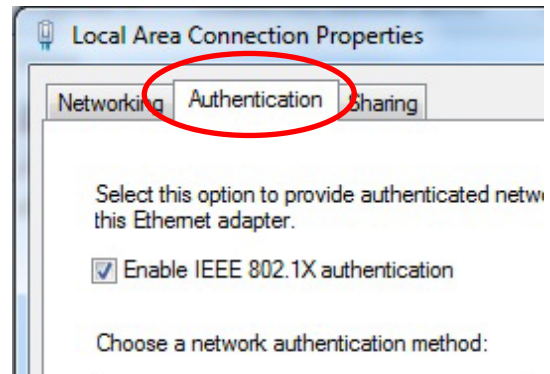


12. Right click **Local Area connection** and select **Properties**

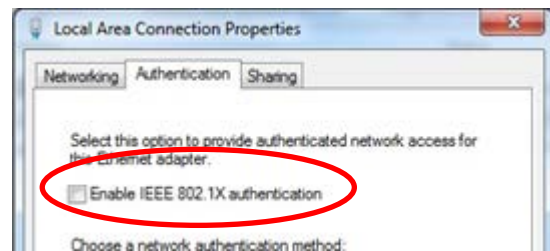


Network Lite Settings Disable Guide

13. Select the **Authentication** tab

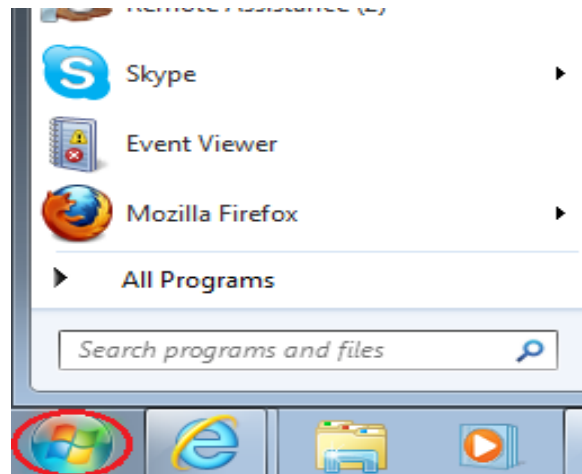


14. Un-tick **Enable IEEE 802.1X Authentication**



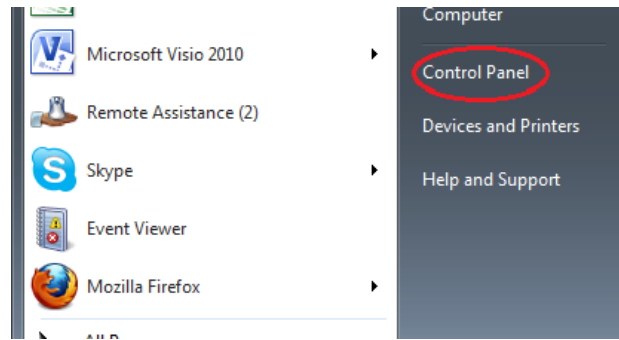
Windows 7

1. Select **Start**

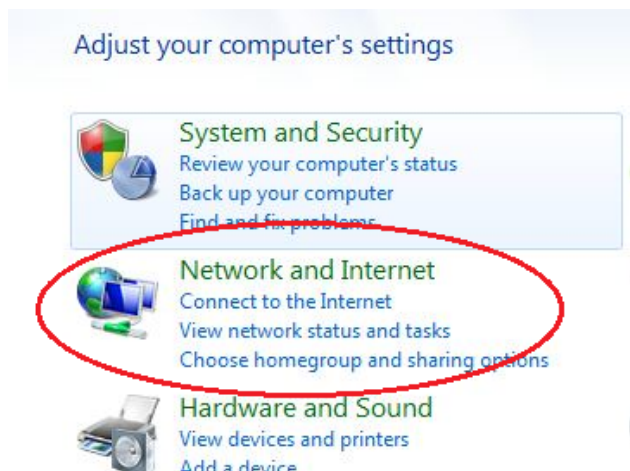


Network Lite Settings Disable Guide

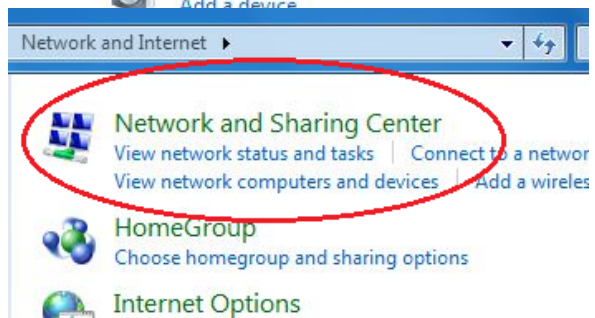
2. Select **Control Panel**



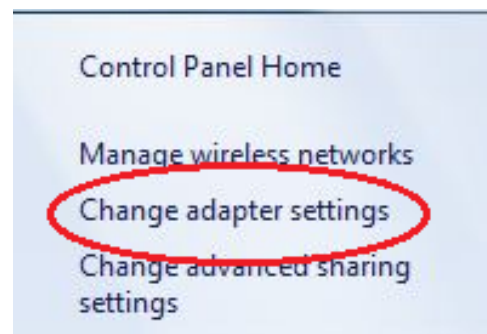
3. Select **Network and Internet**



4. Select **Network and Sharing Center**

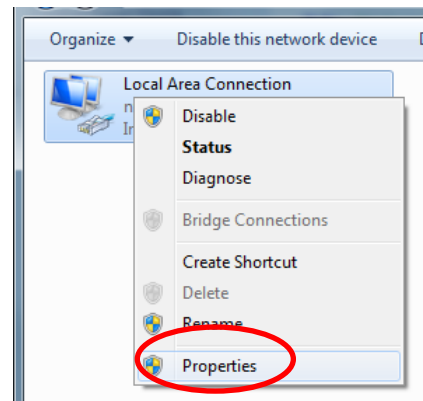


5. Select the **Change adapter setting**

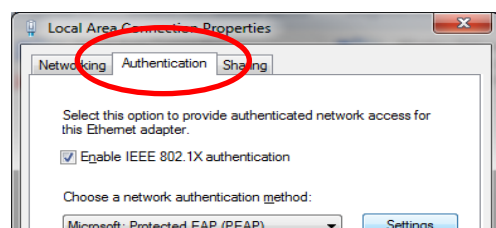


Network Lite Settings Disable Guide

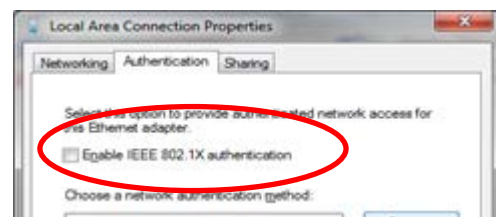
6. Right click **Local Area Connection** and select **Properties**



7. Select the **Authentication** tab

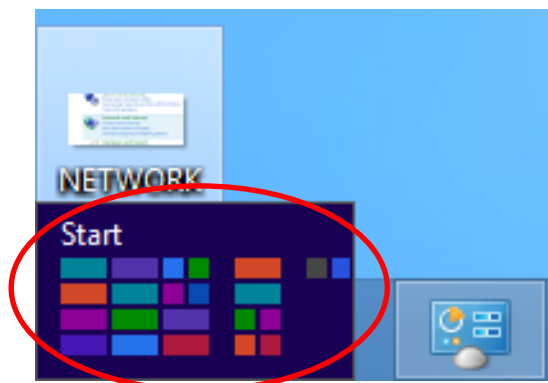


8. Un-tick **Enable IEEE 802.1X authentication**



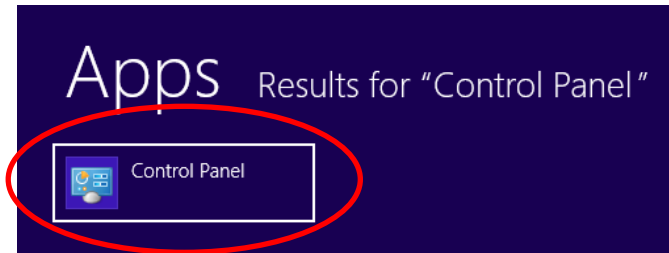
Windows 8

1. Select **Start**

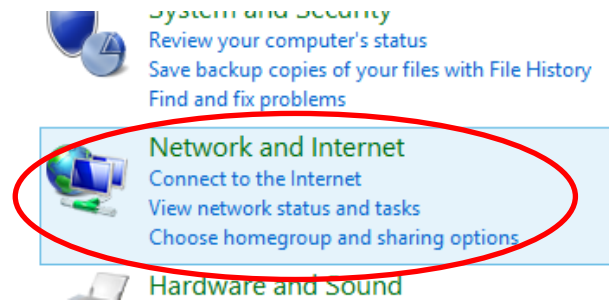


Network Lite Settings Disable Guide

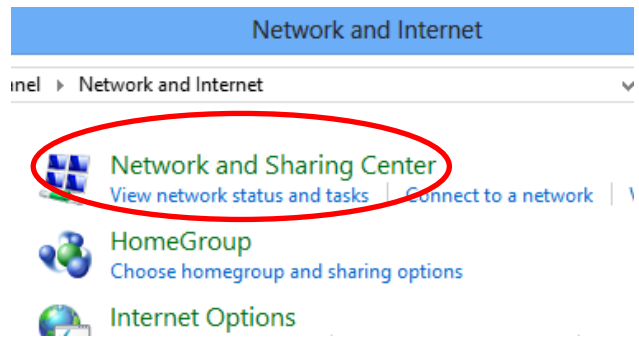
2. Select **Control Panel**



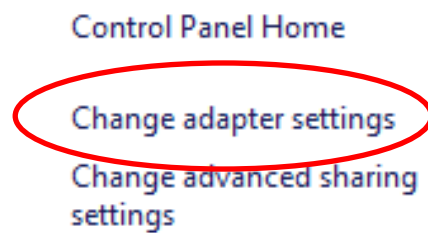
3. Select **Network and Internet**



4. Select **Network and Sharing Center**

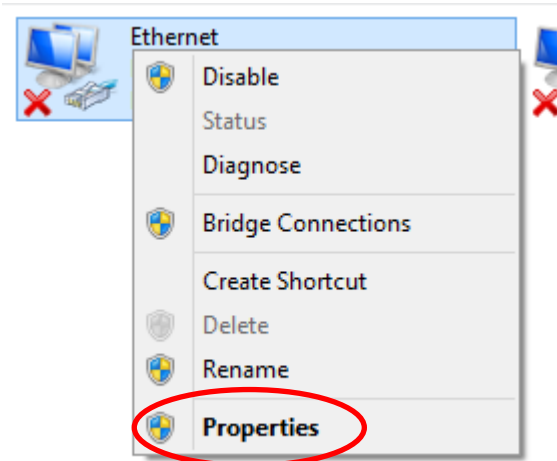


5. Select **Change adapter settings**

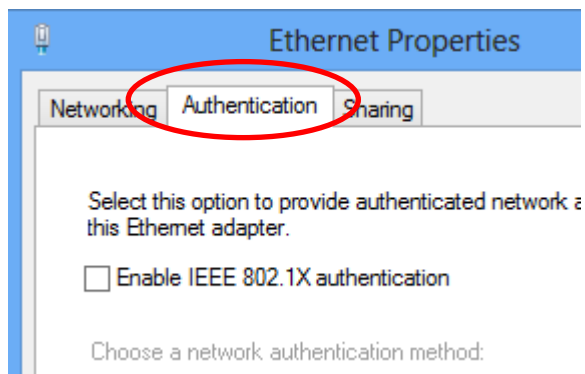


Network Lite Settings Disable Guide

6. Right click **Ethernet** adapter and select **Properties**



7. Select the **Authentication** tab



8. Un-tick **Enable IEEE 802.1X authentication**

