



Plug logger into a PC



Internet Explorer



Application Explorer



GroupWise Email



Microsoft Office W...



Recycle Bin



AutoCAD 2008



AutoCAD 2006



GeoSite5.exe



Application Explorer

Activsync should start

Synchronization Setup Wizard

Welcome to the Pocket PC Sync Setup Wizard

To set up a sync partnership between this computer and your Pocket PC, click Next.

If you click Cancel, you can still:

- Copy and move files between your Pocket PC and this computer
- Add and remove programs on your Pocket PC

< Back Next > Cancel

Internet Explorer

Application Explorer

GroupWise Email

Microsoft Office W...

Recycle Bin

AutoCAD 2008

AutoCAD 2006

GeoSite5.exe

Application Explorer

Microsoft ActiveSync

File View Tools Help

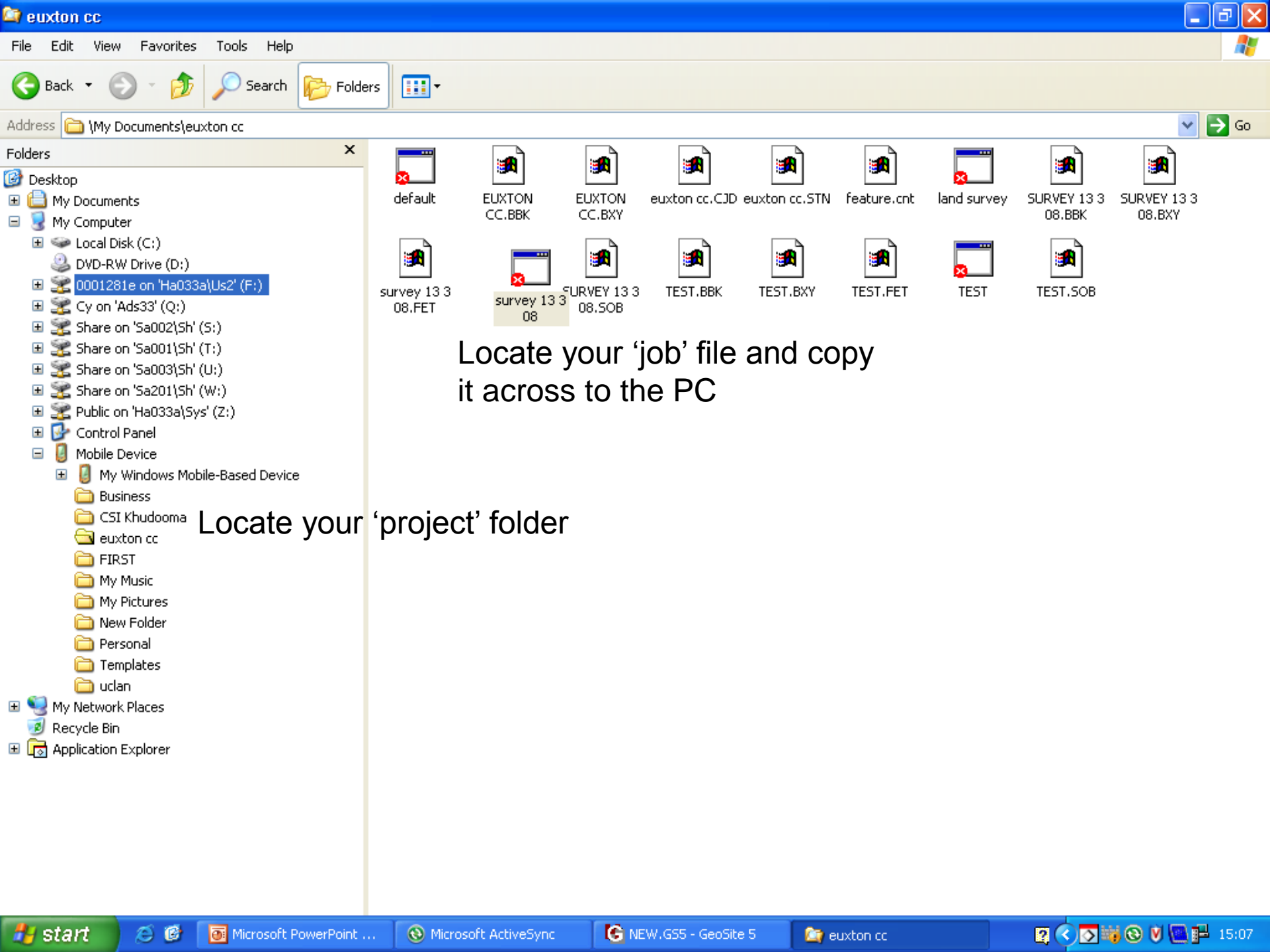
Sync Schedule Explore

Guest

Connected

Hide Details

Information Type	Status



- Folders
- Desktop
 - My Documents
 - My Computer
 - Local Disk (C:)
 - DVD-RW Drive (D:)
 - 0001281e on 'Ha033a\Us2' (F:)
 - Cy on 'Ads33' (Q:)
 - Share on 'Sa002\Sh' (S:)
 - Share on 'Sa001\Sh' (T:)
 - Share on 'Sa003\Sh' (U:)
 - Share on 'Sa201\Sh' (W:)
 - Public on 'Ha033a\Sys' (Z:)
 - Control Panel
 - Mobile Device
 - My Windows Mobile-Based Device
 - Business
 - CSI Khudooma
 - euxton cc**
 - FIRST
 - My Music
 - My Pictures
 - New Folder
 - Personal
 - Templates
 - uclan
 - My Network Places
 - Recycle Bin
 - Application Explorer

default	EUXTON CC.BBK	EUXTON CC.BXY	euxton cc.CJD	euxton cc.STN	feature.cnt	land survey	SURVEY 13 3 08.BBK	SURVEY 13 3 08.BXY
survey 13 3 08.FET	survey 13 3 08.SOB	SURVEY 13 3 08.SOB	TEST.BBK	TEST.BXY	TEST.FET	TEST	TEST.SOB	

Locate your 'job' file and copy it across to the PC

Locate your 'project' folder

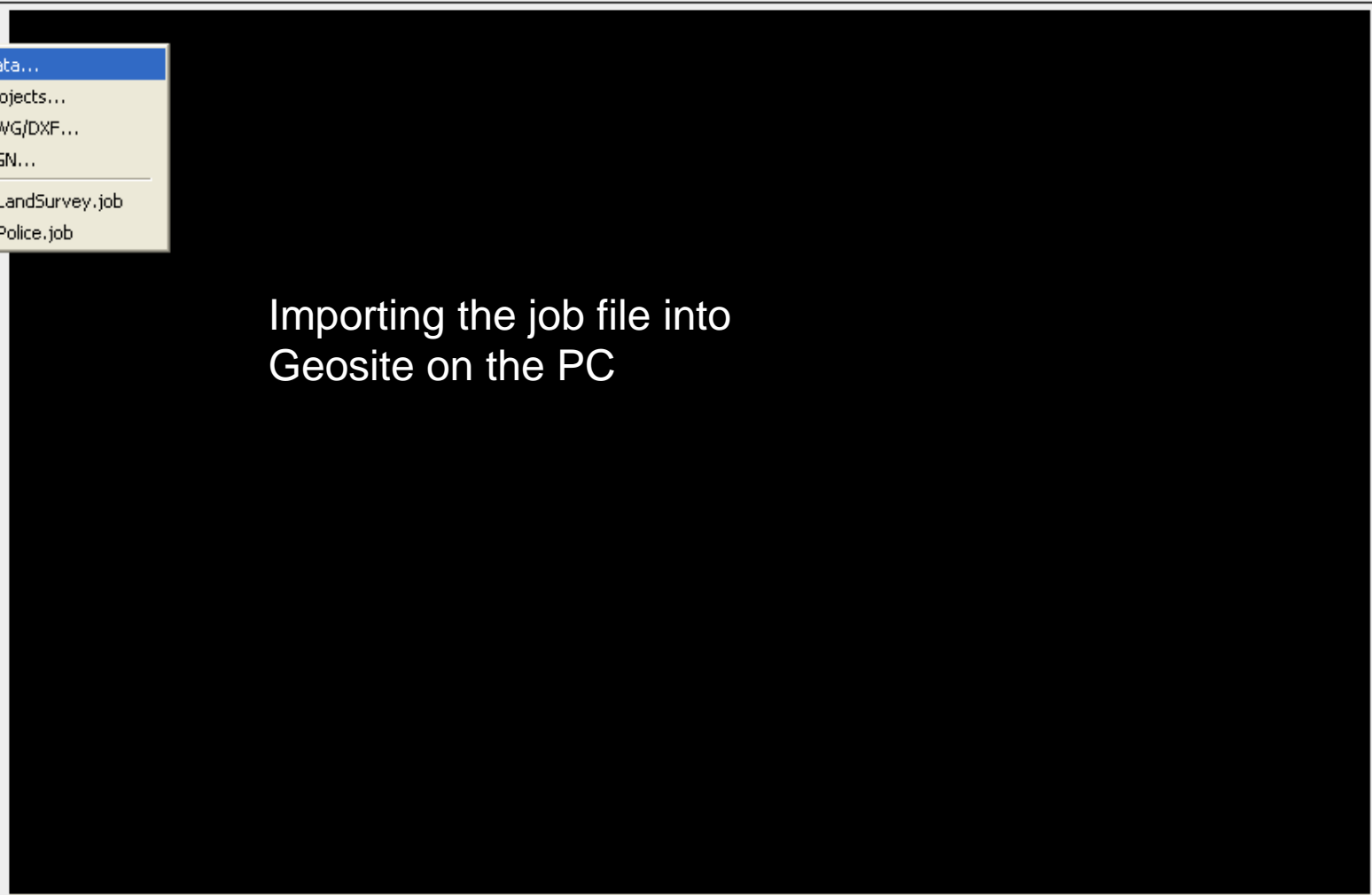
- New
- Open
- Save Ctrl+S
- Revert Ctrl+R

- Import
 - Data...
 - Projects...
 - DWG/DXF...
 - DGN...
- Link Files
- Export To
- Print
- Exit

CAD gsSolid STANDAR [Red Square]

3D

Mode: SURVEY Select



Importing the job file into
Geosite on the PC

973.4466 , 1081.2617 , 0.0000 [z] ORTHO OFF

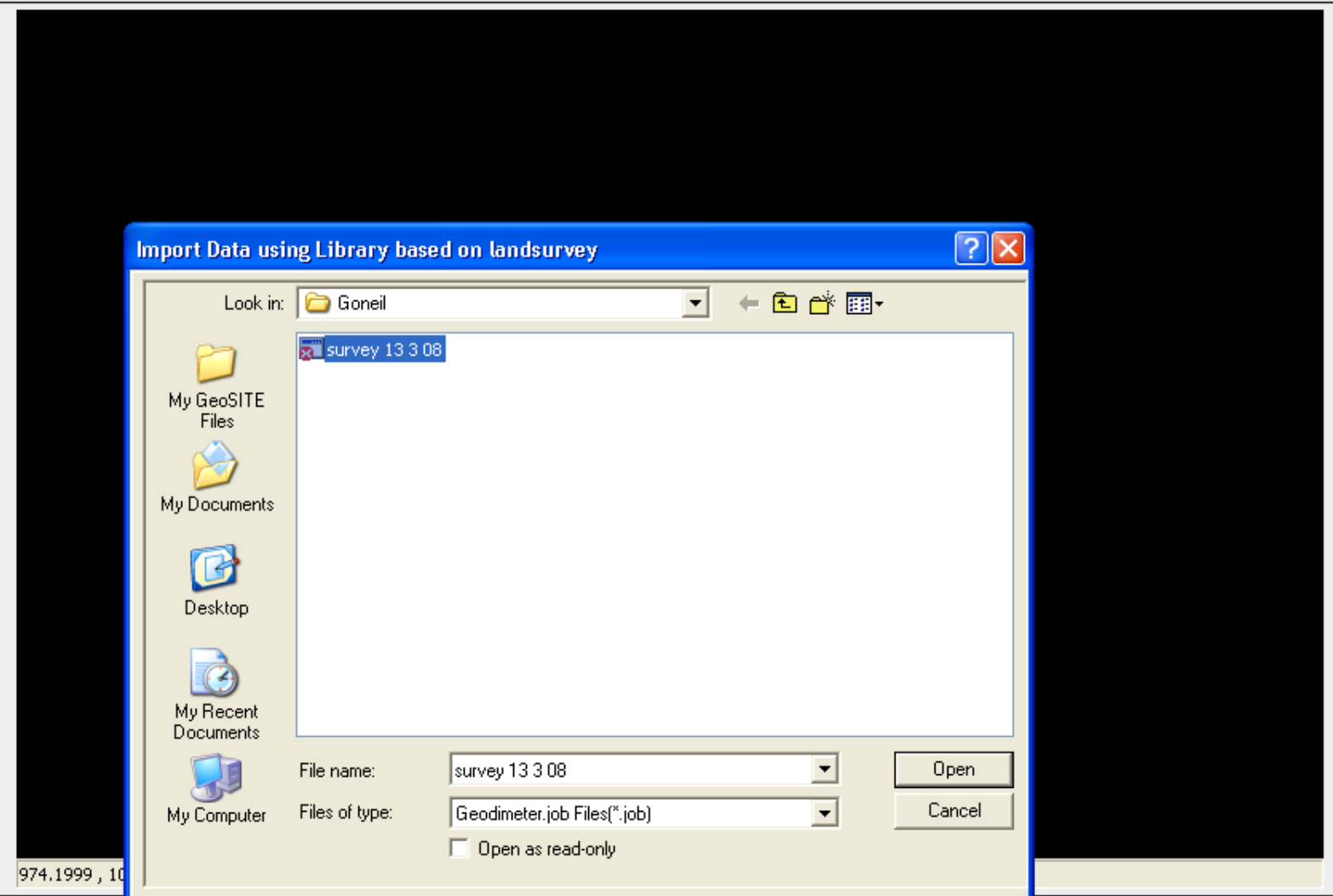
AutoSave Not Required
AutoSave Not Required

Text1

Raw Data

Raw Features

PtID	Code	XYZ



Import Data using Library based on landsurvey [?] [X]

Look in: Goneil

- My GeoSITE Files
- My Documents
- Desktop
- My Recent Documents
- My Computer

survey 13 3 08

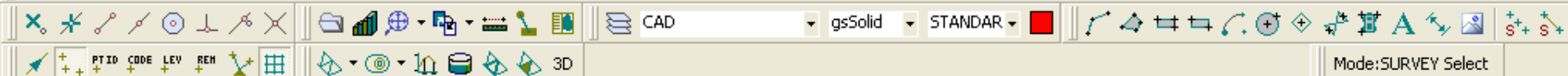
File name: survey 13 3 08 [v] [Open]

Files of type: Geodimeter.job Files (*.job) [v] [Cancel]

Open as read-only

[Options] [General Comms] [Trimble Link Engine]

AutoSave Complete
Importing ...
import



Raw Data

Raw Features

1 2 3

- DATA
 - SETUP
 - SETUP
 - SETUP
 - CONTROL

The main workspace shows a 3D coordinate system with a grid. The vertical axis is labeled '1000 E', '1050 E', and '1100 E'. The horizontal axis is labeled '1050 N' and '1100 N'. A green number '1.462' is displayed in the upper center. A dialog box titled 'Unrecognised Field Codes' is centered on the screen. The dialog box contains the text: 'The following Field Codes were not recognized: SP, RAILINGS1, SCOREBRD AREA, PATH3, BLDG4, CRICKET SQ, CAR PARK5, LANE, PATH6, RAILINGS8, Add to Library and continue?'. Below the text are two buttons: 'Yes' and 'No'. The 'Yes' button is circled in red. At the bottom of the workspace, the coordinates '977.9664, 1073.9171, 0.0000' and the text 'z ORTHO OFF' are visible.

Importing ...
Imported in 2.463secs!
import

Include In Report

Computations Warning

HORIZONTAL DISTANCES
 The following Observations failed the O-C Tolerance
 Setting (1mm) :-
 1.4
 The following Observations failed the Dev Tolerance
 Setting (1mm) :-
 3.4
 Maximum O-C is -1257.6mm (Obs 1)
 Maximum Dev is 9.3mm (Obs 3)

HEIGHT DIFFERENCES
 The following Observations failed the O-C Tolerance
 Setting (1mm) :-
 1.4
 The following Observations failed the Dev Tolerance

Accept All Return to Computations **Accept**



1103.3448 , 1001.9126 , 0.0000 SNAP OFF GRID OFF ORTHO OFF OSNAP OFF

Process Secondary Traverses

Reset Adjust LSQ

Accept Cancel

import

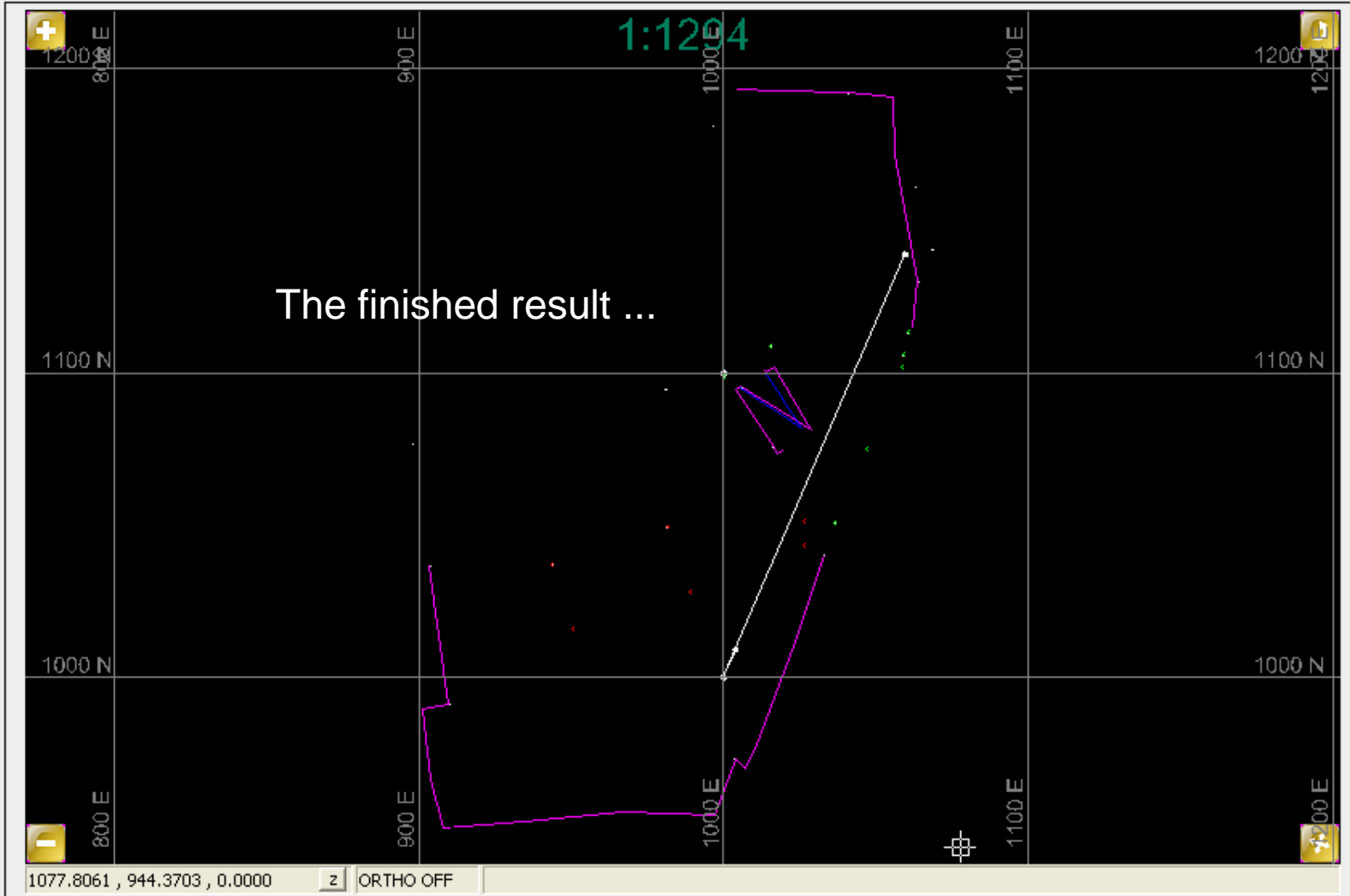
Raw Data

Raw | Features

ID

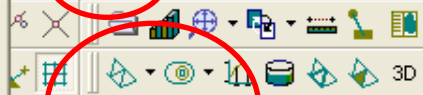
- ⊕ STATION Features
- ⊕ SP Features
- ⊕ RAILING Features
- ⊕ Fence Features
- ⊕ SCOREBRD Features
- ⊕ PATH Features
- ⊕ BLDG Features
- ⊕ CRICKET Features
- ⊕ CAR Features
- ⊕ LAN Features

Navigation: [Left Arrow] [Home Icon] [Right Arrow]



x Drawing Completed in 0.375secs !
 Import Complete!
 import

- New
- Open
- Save Ctrl+S
- Revert Ctrl+R
- Import
- Link Files
- Export To
- Print
- Exit



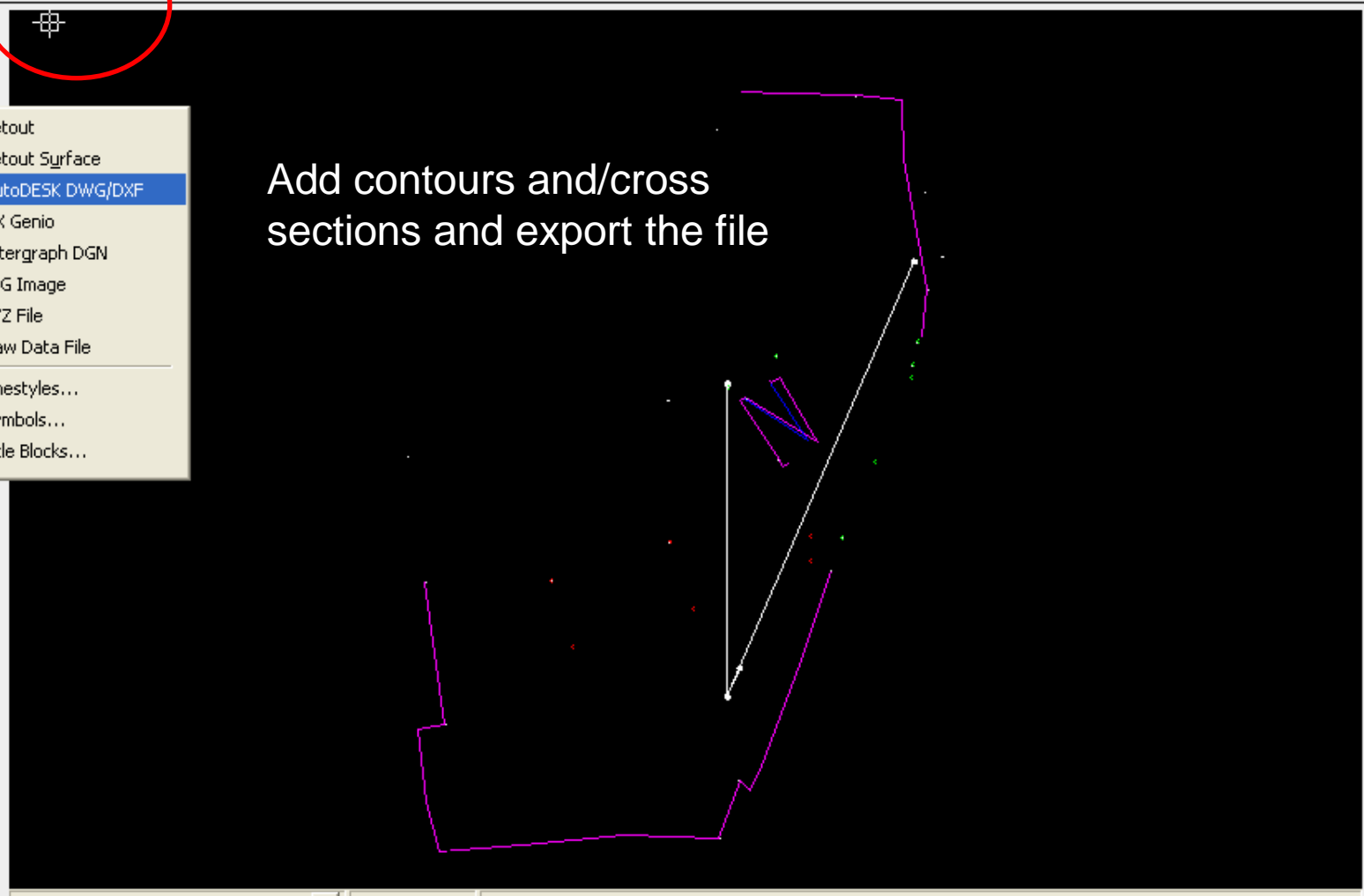
CAD gsSolid STANDAR



Mode: SURVEY Select

- Setout
- Setout Surface
- AutoDESK DWG/DXF
- MX Genio
- Intergraph DGN
- JPG Image
- XYZ File
- Raw Data File
- Linestyles...
- Symbols...
- Title Blocks...

Add contours and/cross sections and export the file



783.6159 , 1215.3628 , 0.0000 z ORTHO OFF

Drawing Completed in 0.375secs!
Import Complete!

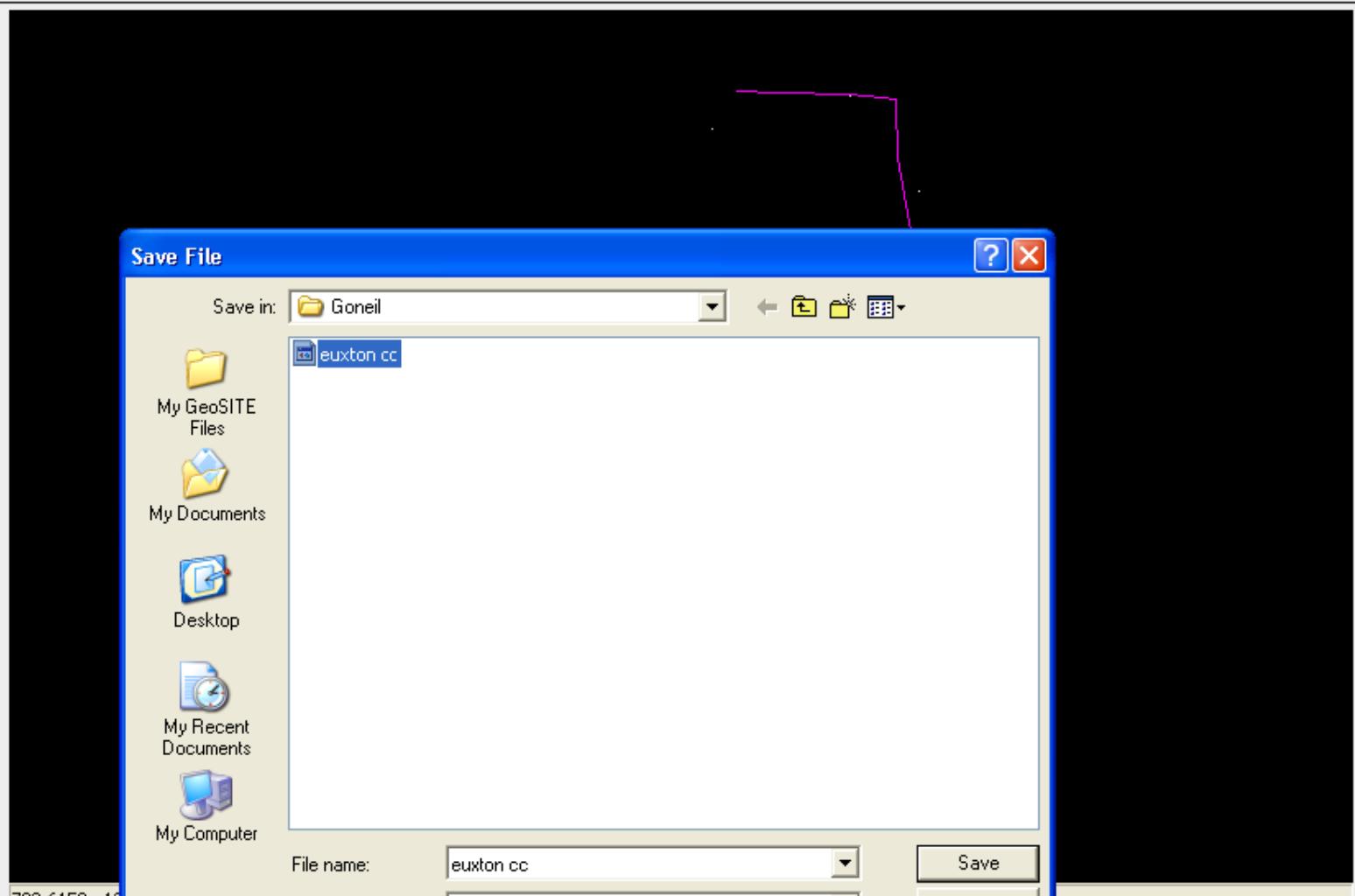
import

Raw Data

Raw | Features

ID

- STATION Features
- SP Features
- RAILING Features
- Fence Features
- SCOREBRD Features
- PATH Features
- BLDG Features
- CRICKET Features
- CAR Features
- LAN Features



Save File

Save in: Goneil

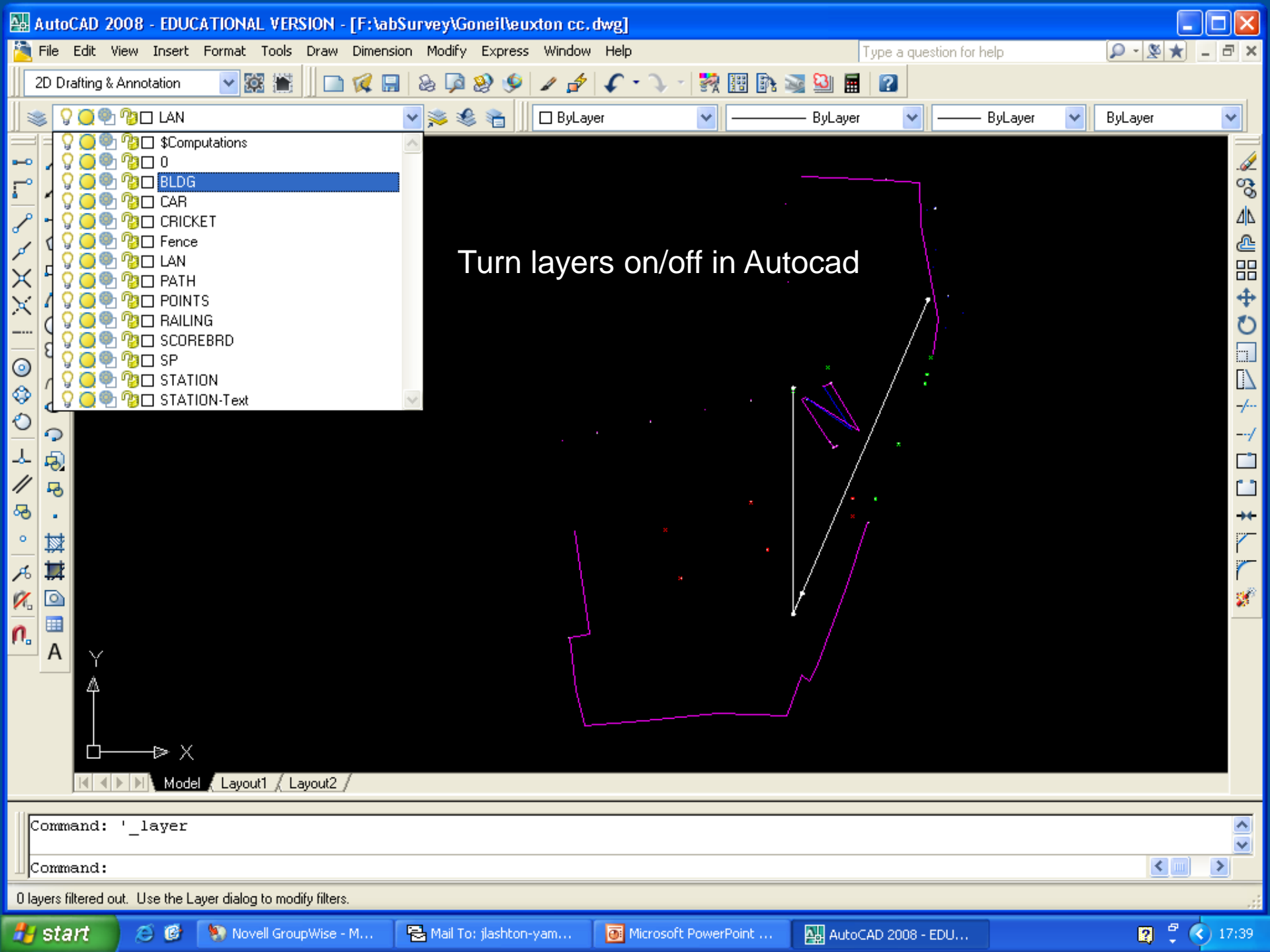
File list: euxton cc

File name: euxton cc

Save as type: AutoDesk DXF/DWG

Buttons: Save, Cancel

AutoSaving..
AutoSave Complete



- \$Computations
- 0
- BLDG
- CAR
- CRICKET
- Fence
- LAN
- PATH
- POINTS
- RAILING
- SCOREBRD
- SP
- STATION
- STATION-Text

Turn layers on/off in Autocad

Command: '_layer'

Command:

0 layers filtered out. Use the Layer dialog to modify filters.